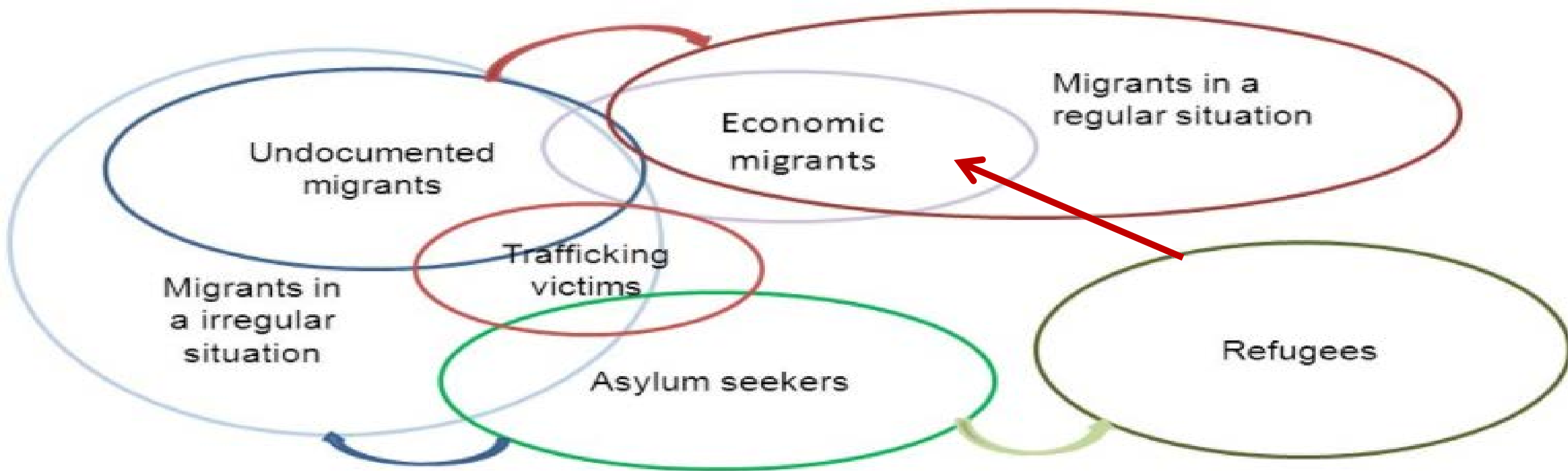


The Arrival City:

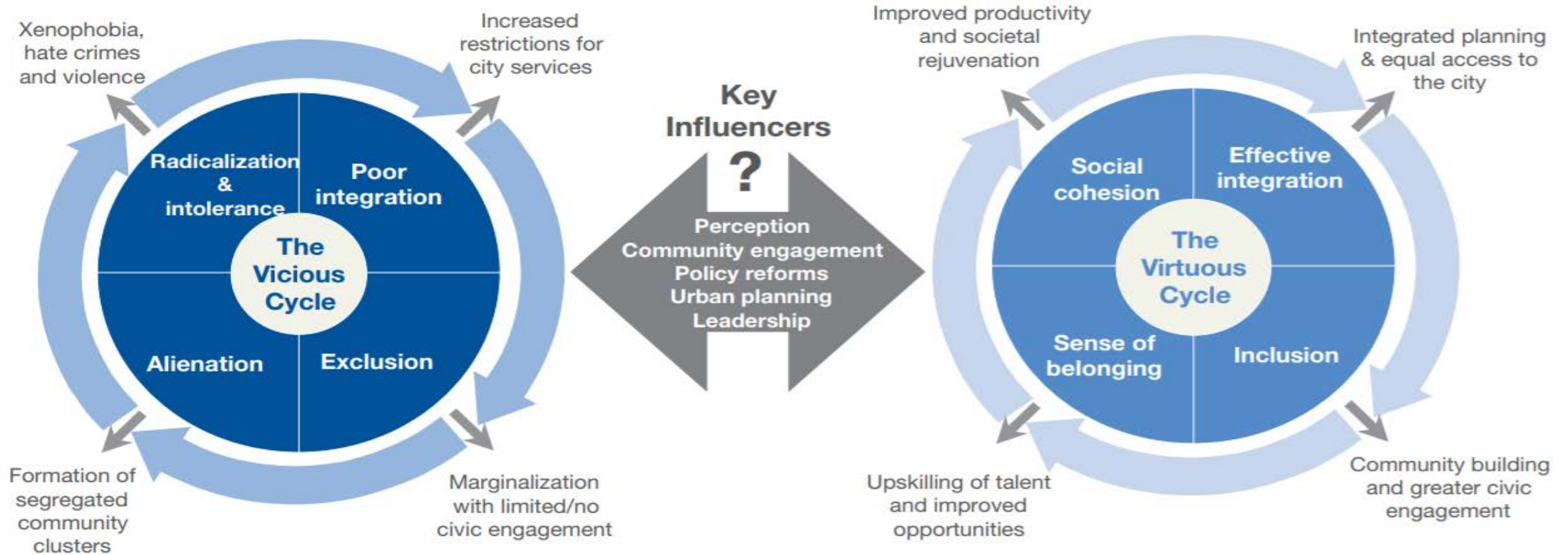
A set of
immigrant
networks
and calculated
investments
in an urban
Future



Who is a migrant?



Source: World Economic Forum Future of Urban Development and Services Initiative



Removing Obstacles to Self-Integration

Physical	Secure housing tenure (or path to ownership)	Ability to invest in community and affect its shape and direction	Quick transit access to get to jobs and bring in customers
Institutional	Full educational inclusion; incentives to stay in school	Schools that serve as magnets rather than deterrents	State resources for inclusion: Libraries, community centres
Economic	Easy ability to open a legal business, borrow, bank	Inclusive hiring; access to employment networks	Flexibility in using physical space for retail / food service / etc
Political	Pathway to full legal citizenship or inclusion	A voice, or vote, in political processes	Recognition of credentials earned abroad