



Migrant Integration

The Reception of Refugees in Leipzig

November, 29th 2017

Thomas Fabian, Deputy Mayor

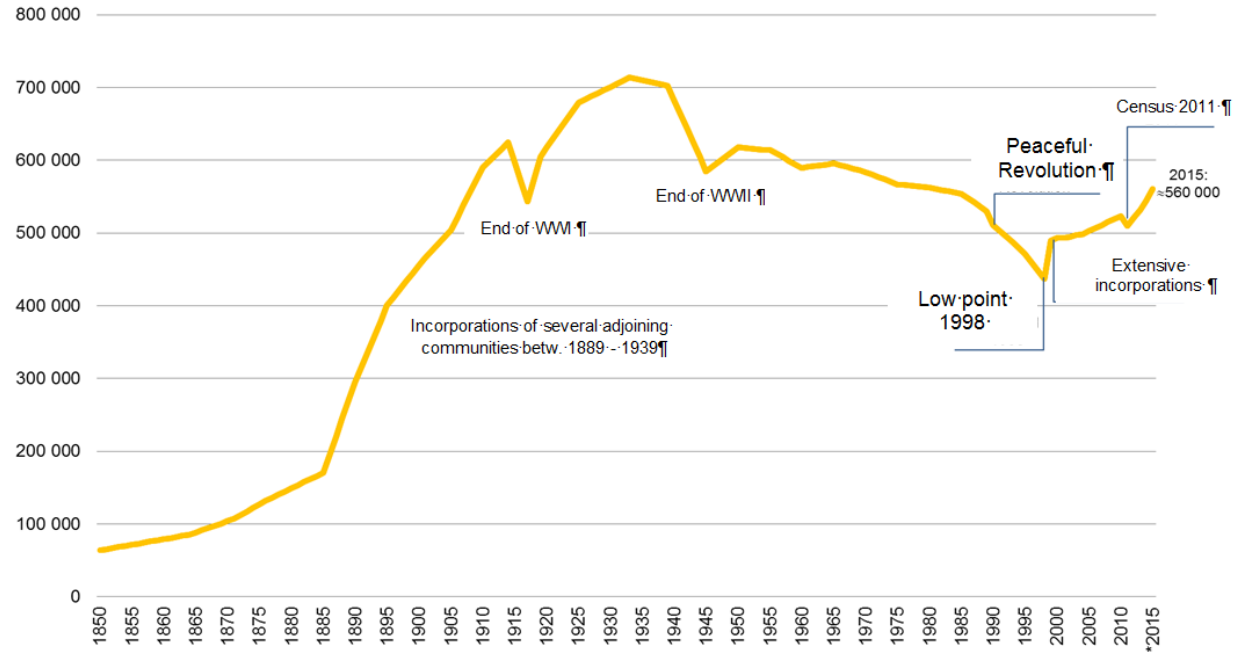
City of Leipzig, Department of Youth, Social Affairs, Health and Education



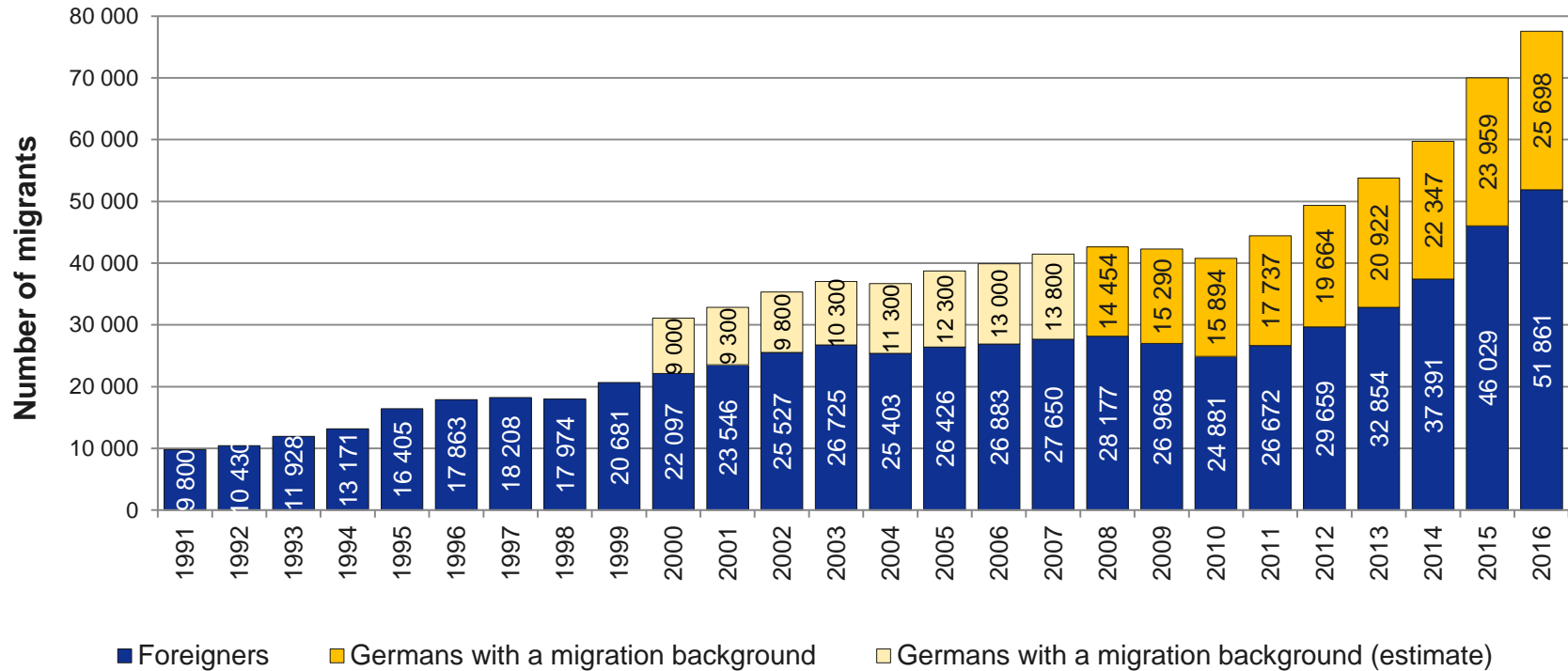
Leipzig – 27 Years after the Peaceful Revolution



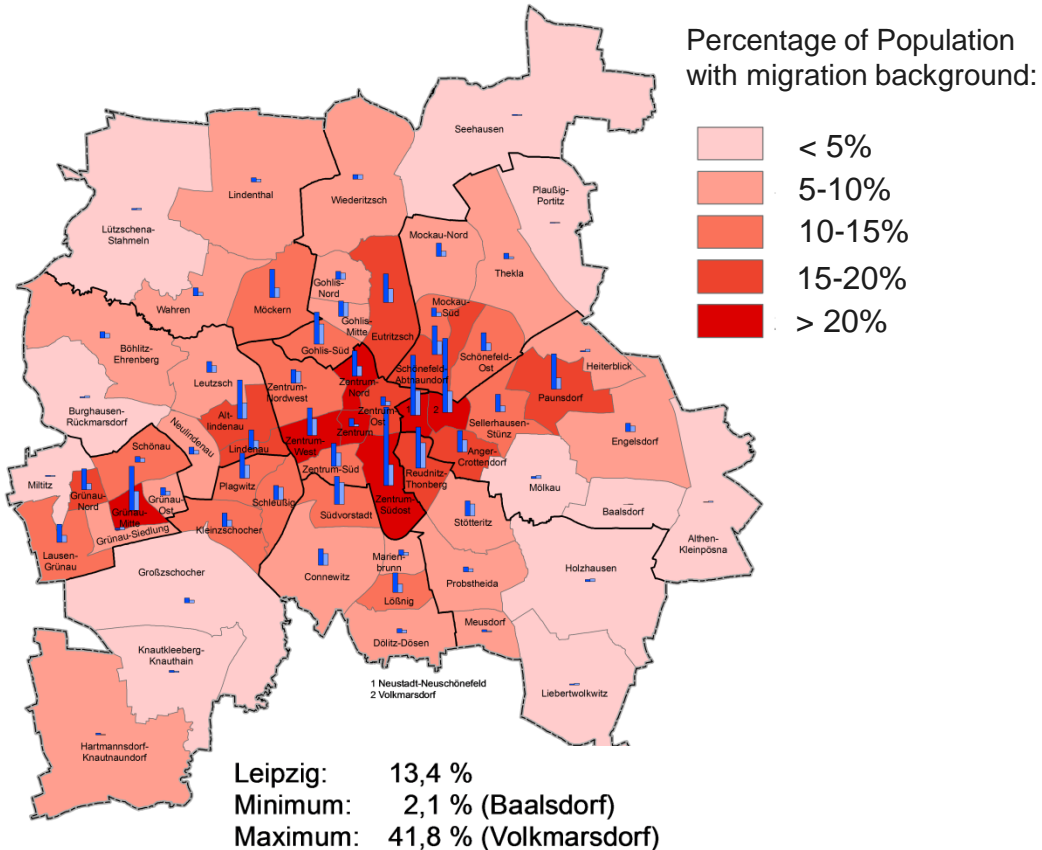
Photo: LTM Punctum,
Alexander Schmidt



Migration and the City of Leipzig



Geographic Distribution of Migrants in Leipzig



Refugees

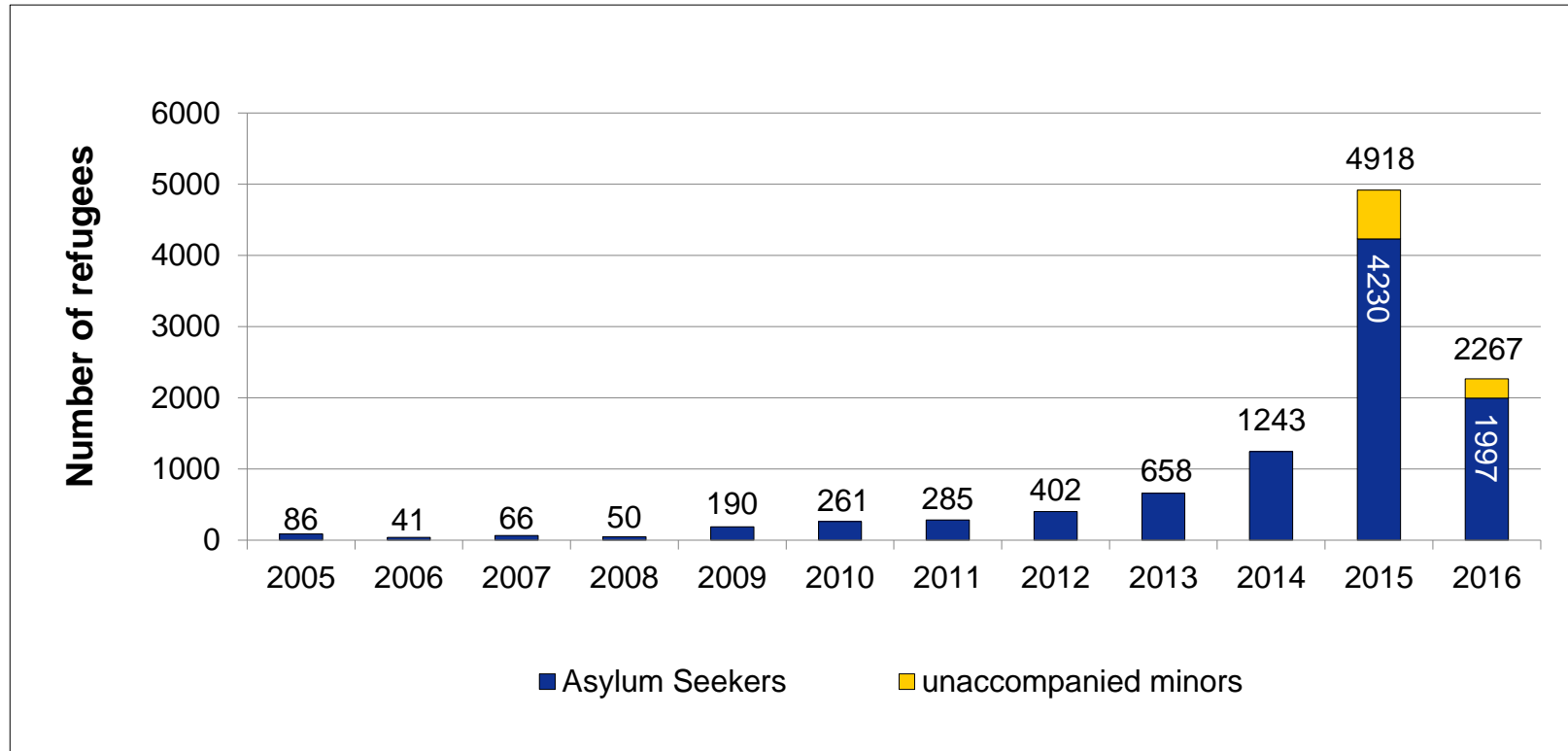


- 2015 and 2016 has been characterized by quickly accommodating a large number of asylum seekers



Mural in Tarifa, Spain

Refugees received in Leipzig



Immediate Action



Political Leadership: Continuous and Transparent Communication

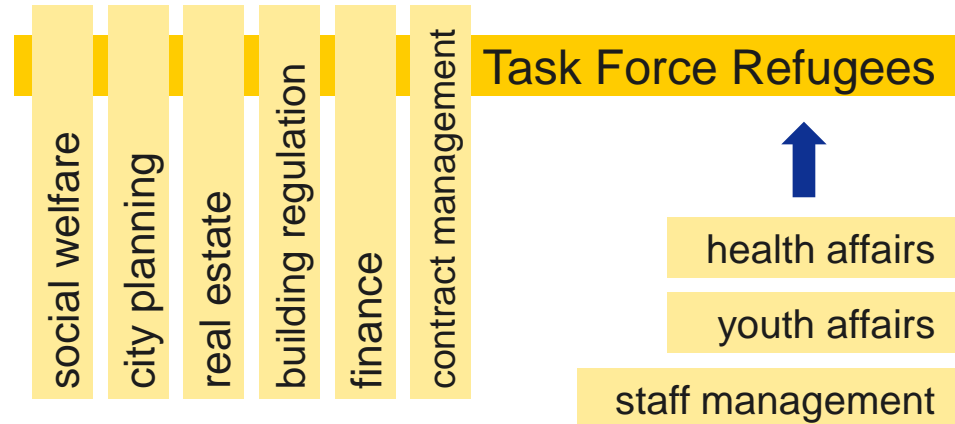
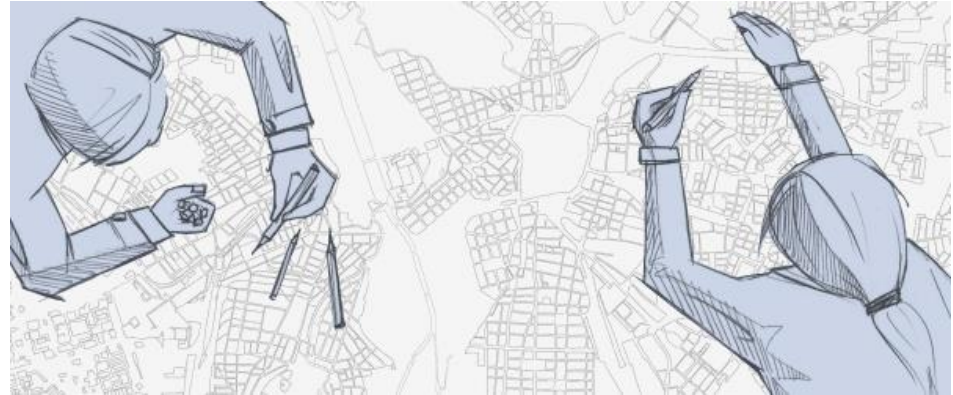


- Proactive communication against xenophobic attitudes
- Open discussions in many neighborhood meetings
- Overwhelming civil engagement

Collaboration within and outside the Administration



- Refugees were a top priority of local administration for two years
- Weekly meetings of heads of departments with the mayor
- Unity in action: task force on refugee housing
- Accelerating decision making processes
- Intensive cooperation with regional and national organizations



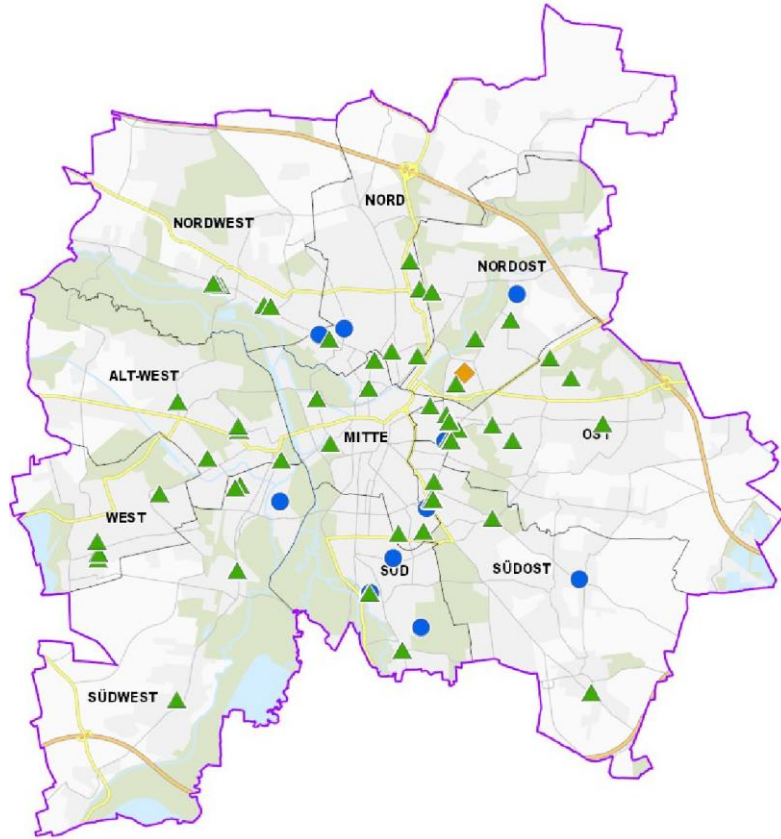
Our Strategy for Integration



Political Guidelines and a Concept for Integration



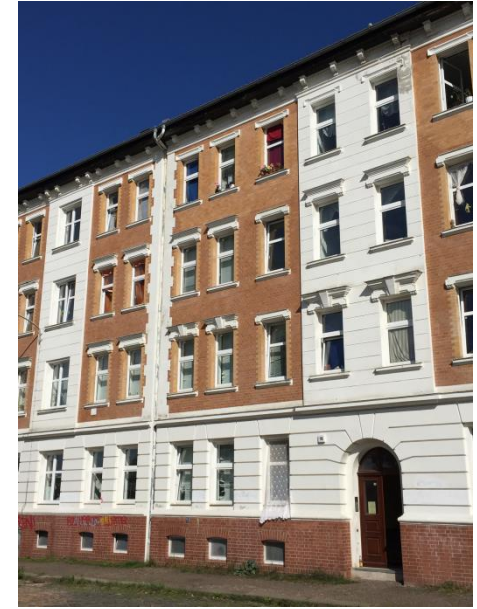
Geographic Distribution of Refugee Homes



Social Work



- Support refugees in daily life
- Serve as contact persons for immediate neighbors
- Build networks into the wider community



Education: Start Early



- German language as a key factor for integration



Integration into Work



Measures by Employment Agency and Job Center:

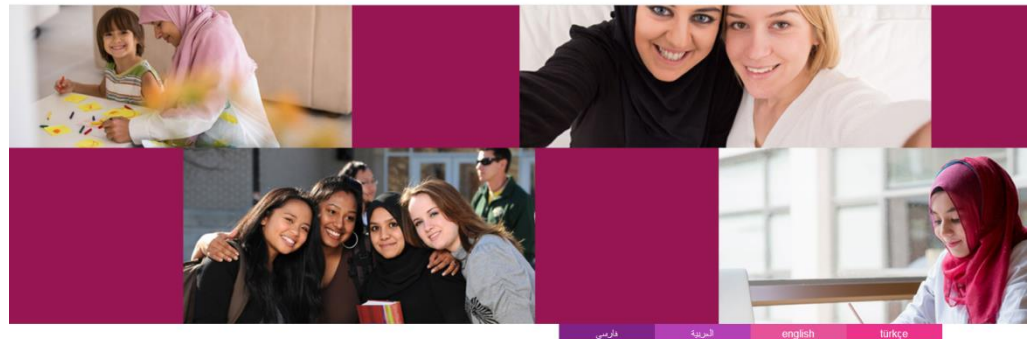
| Measures | Successfully placed refugees | |
|-----------------------------------|------------------------------|------------|
| | 2016 | 08/2017 |
| Integration into the labor market | 481 | 446 |
| Integration into training | 34 | 41 |
| TOTAL | 515 | 487 |

Integration programmes with various focuses:



Frauen in Arbeit | Frauen in Aktion

Interkulturelles
Frauen-, Informations- und
Begegnungszentrum Leipzig

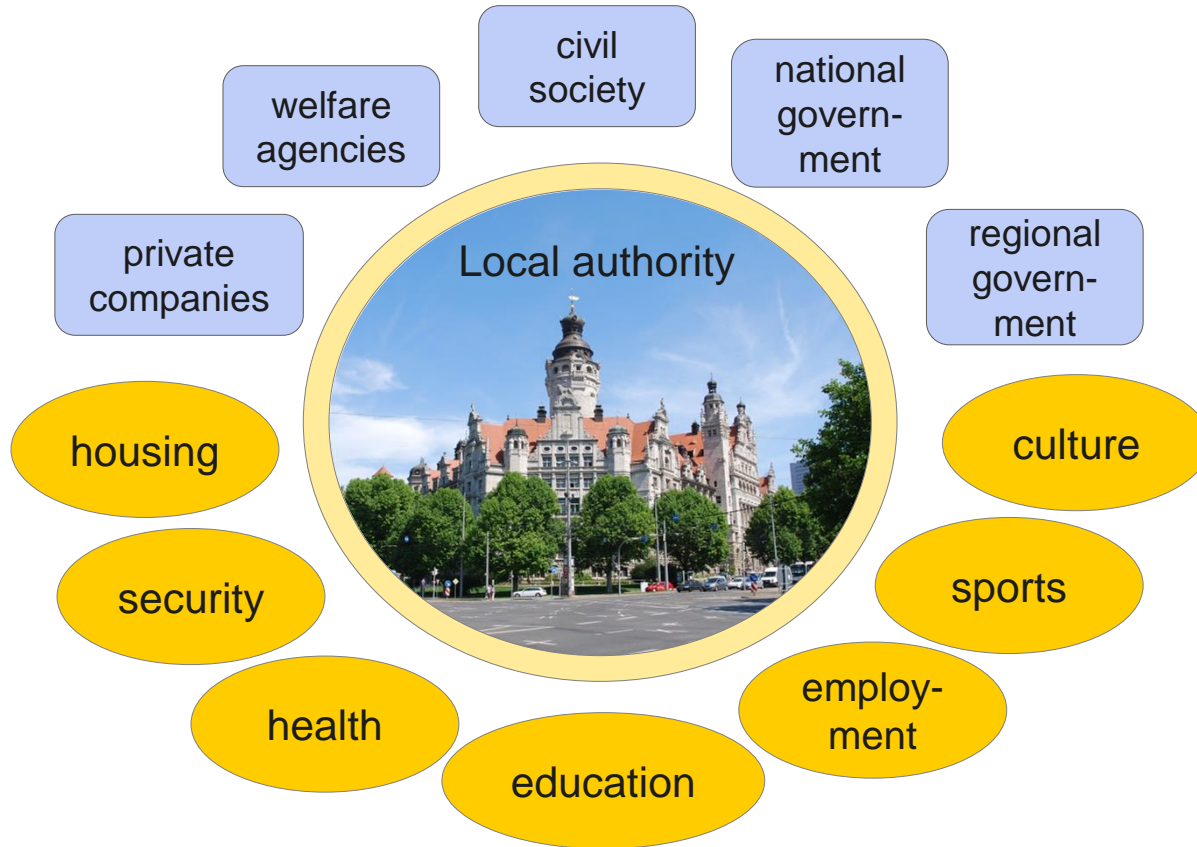




Sports & Leisure



Cooperate with all stakeholders and address all policies



Our Task: Helping Refugees to Settle In



Leipzig's mentoring program: „Ankommen in Leipzig“
Photo: Eric Kemnitz

- Refugees shall arrive well in our cities
- It is our duty to accompany them on their way into our urban societies
- This will be achieved in joint efforts of administration, politics and civil society

Thank you!





Stadt Leipzig

Department of Youth, Social Affairs,
Health and Schools

04092 Leipzig

Tel.: 0341 123-4300

Fax.: 0341 123-4305

www.leipzig.de

