

# 23RD SESSION OF THE STANDING COMMITTEE ON PROGRAMMES AND FINANCE

AGENDA ITEM 11

## A FRAMEWORK FOR ASSISTED VOLUNTARY RETURN AND REINTEGRATION AND INDICATORS FOR MEASURING SUSTAINABLE REINTEGRATION

Anh NGUYEN

*Head, Migrant Protection and Assistance Division*

*Department of Migration Management*

# INTRODUCING THE FRAMEWORK

## WHY AND AVRR FRAMEWORK, WHY NOW?

- The framework stems from the need to publicly reaffirm IOM's leadership and long-lasting expertise on AVRR in a coherent, principled and comprehensive manner. It is the an overarching and external document, that has the ambition to outline *what* AVRR is, *how* it is implemented and *why*.

## CURRENT CONTEXT:

- Renewed political importance of return and reintegration
- Evolution of AVRR practices
- New actors

## AUDIENCE:

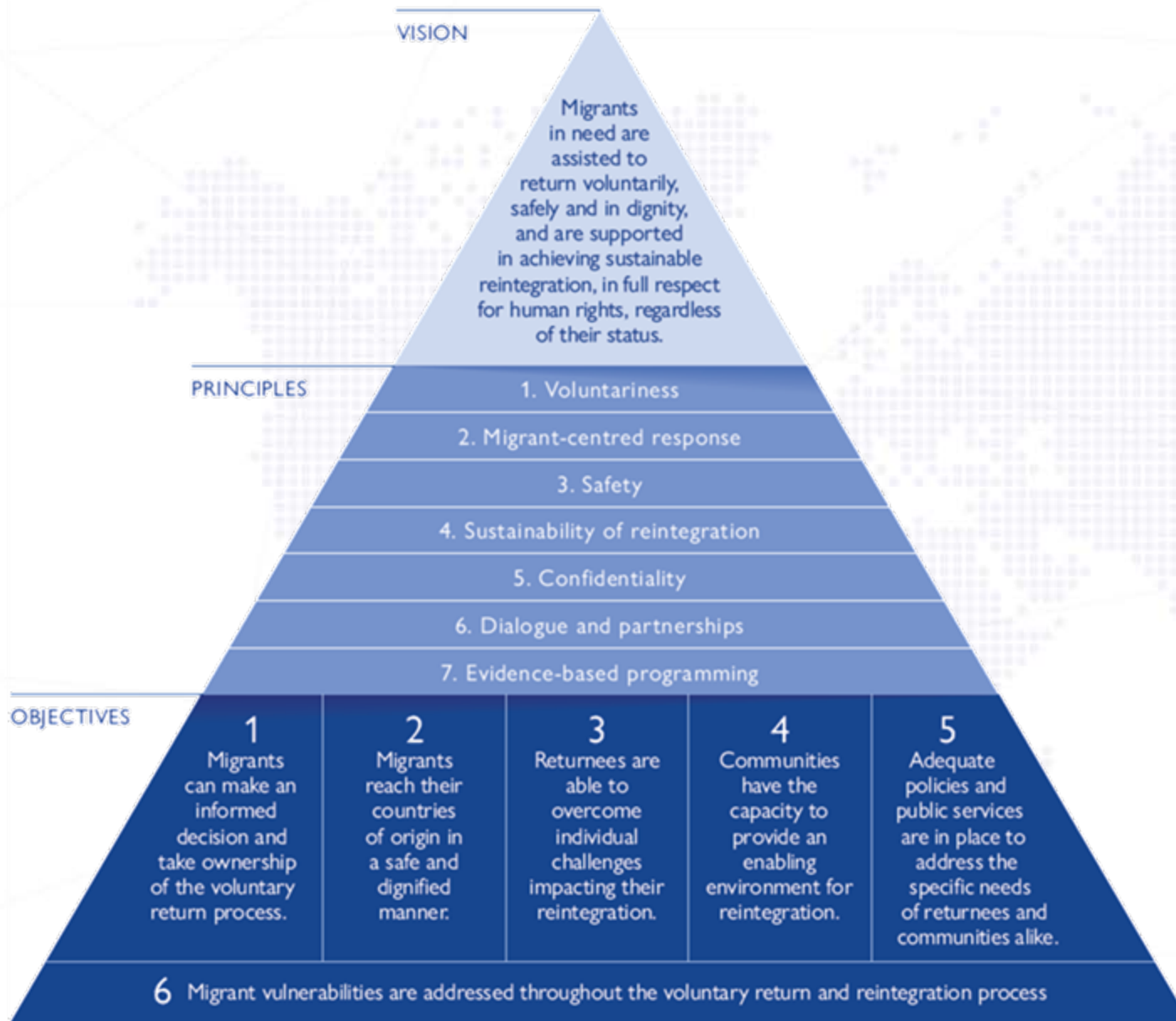
- The framework is an external document intended for a broad target audience

# KEY TENETS OF THE FRAMEWORK

## OVERALL STRUCTURE OF THE FRAMEWORK

- The framework outlines the value of AVRR as an essential pillar of migration management, and as a preferred option for migrants to return in a voluntary, humane and dignified manner. It provides a conceptual logical model structured along a vision, seven principles, and six objectives. Each objective is illustrated by a set of relevant AVRR activities.

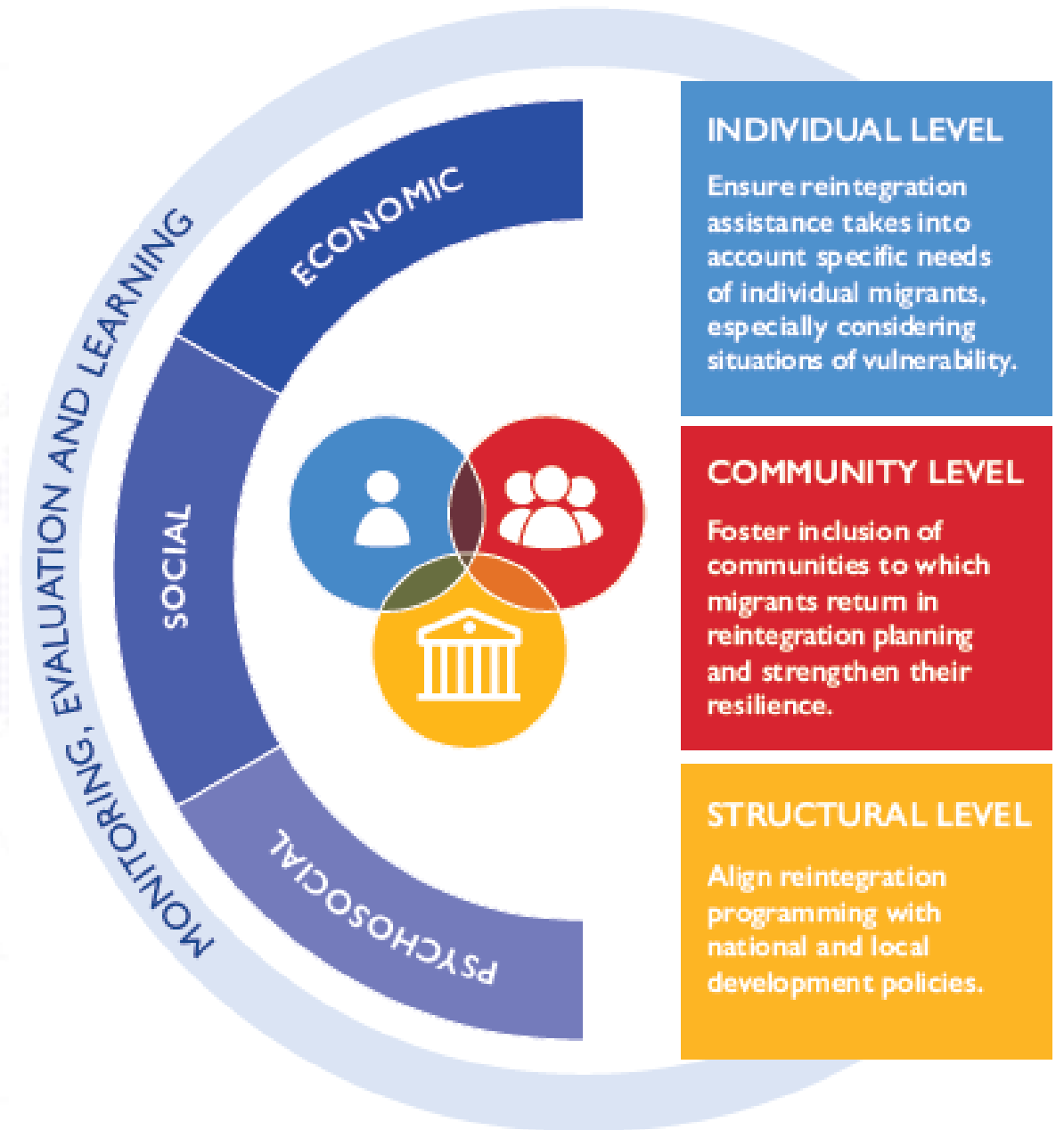
# THE AVRR FRAMEWORK MODEL



Vision, Principles and Objectives

# THE INTEGRATED APPROACH TO REINTEGRATION

1. Individual, community and structural levels
2. Economic, social and psychosocial dimensions
3. Monitoring, Evaluation and Learning





# MEASURING SUSTAINABILITY

## REINTEGRATION SUSTAINABILITY SURVEY

- 15 field-tested indicators and 30 measurement elements
- 32 questions separated into three sections encompassing the economic, social and psychosocial dimensions of reintegration

## THE SCORING SYSTEM

- 3 dimensional scores (measuring reintegration in the economic, social and psychosocial dimensions)
- 1 composite reintegration score that provides a numerical measure of overall reintegration across dimensions and is useful as a tool for evaluation, reporting and analysis.

# MEASURING SUSTAINABILITY

## ECONOMIC DIMENSION

### MEASUREMENT ELEMENTS

1. Satisfaction with current economic situation
2. Frequency of food insecurity
3. Ability to borrow money
4. Frequency of borrowing money
5. Debt to spending ratio
6. Perceived access to employment and training
7. Currently working
8. Ownership of productive assets
9. Currently searching for a job

## SOCIAL DIMENSION

### MEASUREMENT ELEMENTS

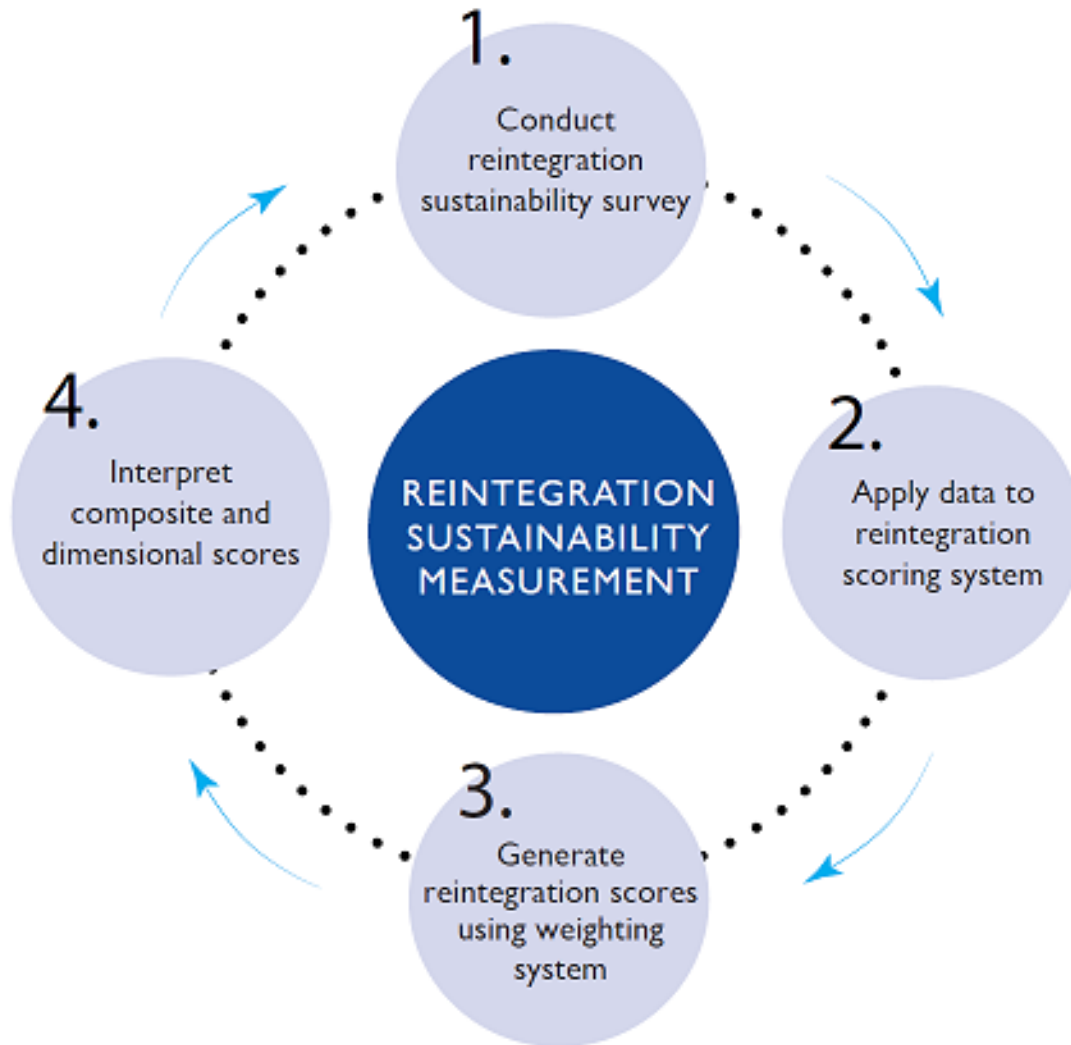
10. Access to housing in community
11. Perceived standard of housing
12. Access to education in community
13. Children enrolled in school
14. Access to justice and law enforcement in community
15. Possession of ID
16. Access to health care in community
17. Quality / Adequacy of healthcare in community
18. Access to documentation in community
19. Access to safe drinking water in community
20. Access to public services in community

## PSYCHOSOCIAL DIMENSION

### MEASUREMENT ELEMENTS

21. Participation in social activities
22. Strength of support network
23. Sense of belonging to community
24. Sense of physical security
25. Frequency of conflict with family/domestic tension
26. Feeling of discrimination in Country of origin
27. Frequency of experiencing signs of distress
28. Desire to receive psychological support
29. Subjective ability to stay in Country of origin
30. Need vs. Wish to remigrate

# REINTEGRATION SUSTAINABILITY MEASUREMENT PROCESS



- Helps to understand returnees' reintegration process and needs, and adjust the provision of reintegration assistance accordingly
- Key for programme evaluation, by helping identify and address gaps
- Serves as a basis for research purposes, making it possible to compare trends across dimensions, country contexts and over time



# THANK YOU

Anh NGUYEN

Head, Migrant Protection and Assistance Division

[anguyen@iom.int](mailto:anguyen@iom.int)

