

24TH SESSION OF THE STANDING COMMITTEE ON PROGRAMMES AND FINANCE

AGENDA ITEM 16

Developing policies and practices on sustainable
reintegration

Nicola Graviano

Senior Assisted Voluntary Return and Reintegration Specialist

Migrant Protection and Assistance Division

Department of Migration Management



OVERVIEW

1) An integrated approach to reintegration

2) Keys for success

3) Recommendations for the way forward

SUSTAINABILITY IN THE CONTEXT OF RETURN AND REINTEGRATION

IOM's definition (2017)

- 'Reintegration can be considered sustainable when returnees have reached levels of **economic self-sufficiency, social stability within their communities, and psychosocial well-being** that allow them to cope with (re)migration drivers. Having achieved sustainable reintegration, returnees are able to make **further migration decisions a matter of choice, rather than necessity**'.



International Organization for Migration (IOM)
The UN Migration Agency

Towards an

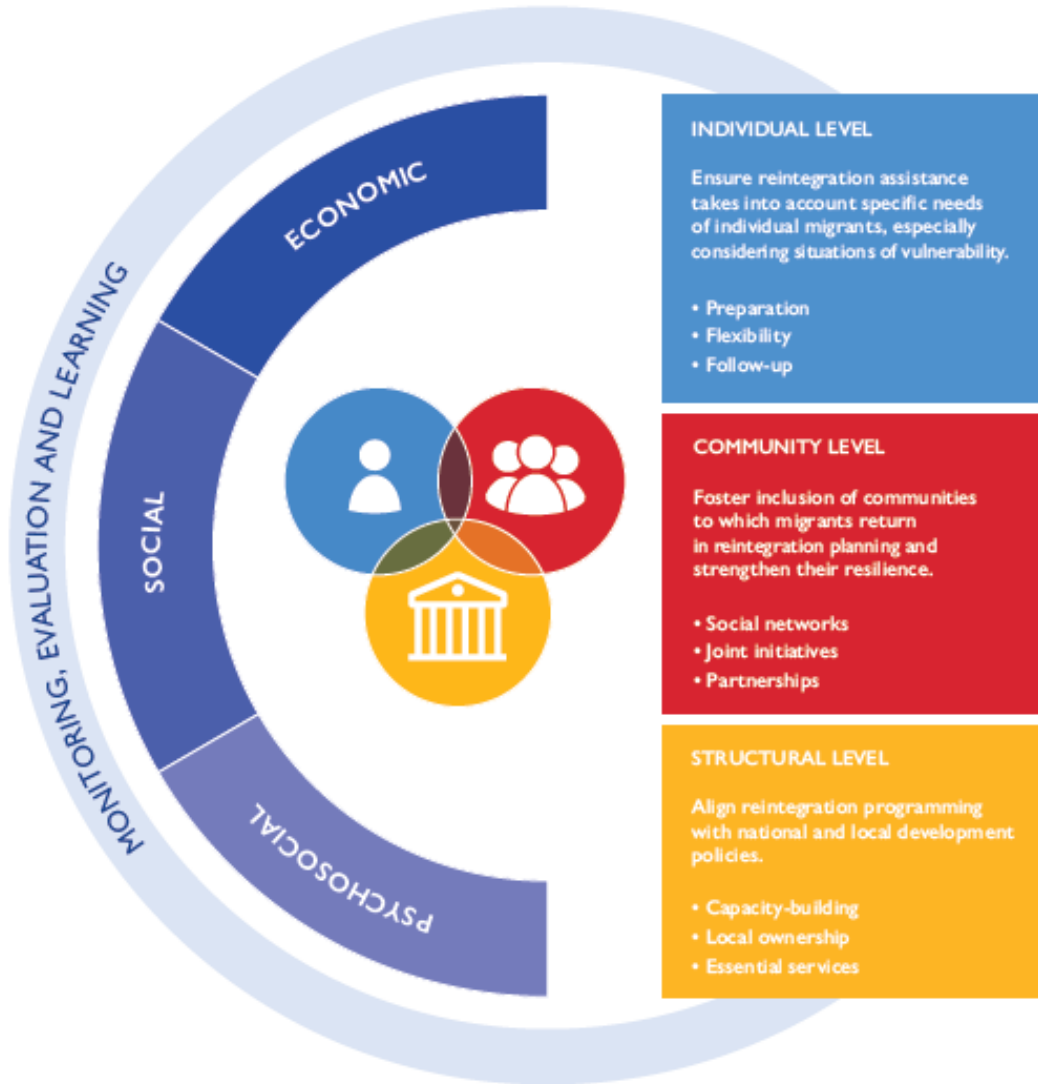
INTEGRATED APPROACH

TO REINTEGRATION

in the context of return



INTEGRATED APPROACH TO REINTEGRATION



- Achieving sustainable reintegration requires a holistic and a need-based approach.
- One that takes into consideration the various factors impacting on reintegration, including economic, social, and psychosocial dimensions, across individual, community, and structural levels.

KEYS FOR SUCCESS: SHARED RESPONSIBILITY, PARTNERSHIP AND COOPERATION

- Aligning reintegration programming with national and local development strategies.
- Promoting a whole-of-government approach to reintegration.
- Identifying complementarities between different funding instruments.



KEYS FOR SUCCESS: SHARED RESPONSIBILITY, PARTNERSHIP AND COOPERATION

EUROPEAN UNION–IOM ACTIONS

- EU-IOM Joint Initiative for Migrant Protection and Reintegration in the Sahel and Lake Chad regions, North Africa and the Horn of Africa.
- The Pilot Action on Voluntary and Sustainable, Community-based Reintegration, which covers Malawi, Mozambique and South Africa.
- Country-level projects to improve the reintegration of returnees in Afghanistan (RADA project) and Bangladesh (Prottasha project).



Joint Initiative activities in Burkina Faso

KEYS FOR SUCCESS: SHARED RESPONSIBILITY, PARTNERSHIP AND COOPERATION



IOM Staff providing information during the return journey in Tapachula, México

SUPPORTING THE GOVERNMENTS OF EL SALVADOR, GUATEMALA AND HONDURAS

- With the support of USAID, reception centres offering integrated services in collaboration with civil society partners.
- Support of local governments in providing sustainable reintegration in line with local development initiatives.
- United Nations Peace Building Fund investment in reintegration efforts as a way to promote social cohesion and prevent violence in communities of return.

KEYS FOR SUCCESS: KNOWLEDGE MANAGEMENT

- Cross-regional harmonization of procedures and frameworks
- Improvement of existing data collection, data management and reporting tools
- Dissemination of lessons learned and good practices



RESOURCES

Search words

Keywords

Type

- ☐ Guidelines
- ☐ Journals
- ☐ Leaflets/booklets
- ☐ Manuals
- ☐ Online courses
- ☐ Position papers
- ☐ Reports
- ☐ Studies

Language

- Any -

Year

The Resources section constitutes a repository of resource materials (e.g. *Guidelines, Jour* are included in the repository. By clicking the selected publication.

Feel free to **browse** the content of r' you are interested in!

Notice that a resource is missing. Then contact us [here](#).



Reintegration
Country
Sustain
IOM



E-COURSES

The E-Courses section is a learning area where the users of the Return and Reintegration Platform can access a variety of some of the most pressing issues related to return, reintegration as well as migration and development.

The proposed selection of e-courses offers several possibilities of learning. Browse the list below to learn about the range included soon!

Please note that the e-courses may charge a fee set by the course provider.



Reintegration Handbook's Online Training Curriculum

As part of the ORION project, an online training curriculum, based on the Reintegration Handbook, is being developed. The intended audience of this curriculum is both internal (IOM reintegration officers) and external (all actors and stakeholders performing reintegration).

[LEARN MORE](#)



Specialized Course on Migrant Children in the Americas

This is a self-paced course that will provide participants with specialized knowledge at the level of specialists who work on the areas of children and migration and aims to deepen their approach to the realities, regulations and protection mechanisms associated with migration.

[LEARN MORE](#)



My JMDI e-Toolbox on Migration and Local Development

My JMDI e-Toolbox on Migration and Local Development is a flexible and comprehensive toolbox for migration and development at the local level (local and national authorities, civil society).



RETURN AND
REINTEGRATION
PLATFORM

COMMUNITY OF PRACTICE

[Log in](#)

[Create new account](#)

[Reset your password](#)



TOTAL MEMBERS
164



TOTAL GROUPS
5

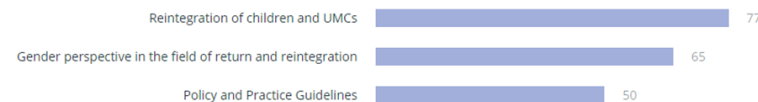


TOTAL ARTICLES
35



TOTAL COLLABORATIONS
205

Number of Members by Group



KEYS FOR SUCCESS: CAPACITY BUILDING

- Promotion of ownership, drawing on the mandates and the expertise of governmental and non-governmental actors alike.
- Creation of structures and processes that aim to ensure continuity beyond the end of projects.
- Ensuring that reintegration initiatives are part of local and national policies and align with development plans.



KEYS FOR SUCCESS: CAPACITY BUILDING



PROJECT TO **OPERATIONALISE** AN INTEGRATED APPROACH
TO **REINTEGRATION** IN THE FRAMEWORK OF ASSISTED
VOLUNTARY RETURN AND REINTEGRATION

ORION PROJECT, FUNDED BY DFID:

DEVELOPMENT OF A REINTEGRATION HANDBOOK AND TRAINING CURRICULUM

- Provide practical guidance on the design, implementation and monitoring of reintegration assistance

MENTORING APPROACH AND COMPARATIVE ANALYSIS

- Mentors serve as a link between returnees and the community
- Compare data collected through the use of reintegration sustainability tools



REINTEGRATION HANDBOOK

Practical guidance on the design,
implementation and monitoring
of reintegration assistance

REINTEGRATION HANDBOOK VIDEO

RECOMMENDATIONS

- Work towards increased level of support to returnees.
- Strengthen the links between pre-departure assistance and reintegration needs.
- Further explore the psychosocial dimension of reintegration.
- Strengthen institutional dialogue and partnerships, mobilizing the expertise of governmental and non-governmental actors.





THANK YOU

Nicola Graviano

Senior Assisted Voluntary Return and Reintegration Specialist

ngraviano@iom.int

